

U

UNOSIDER



Feel

# The Shadow Experience

Unosider ha un'anima solida e rigorosa fatta di ferro e metallo e una più morbida e leggera fatta di tessuti e decori, una componente di precisione e tecnica e una invece più romantica e visionaria.

La nostra più grande capacità è quella di combinare elementi apparentemente in contrasto in uno scambio attivo e proficuo che crea un valore totalmente nuovo.

Da oltre 25 anni lavoriamo per condividere la nostra visione degli spazi esterni e costruiamo strutture che creano nuovi ambienti e nuove esperienze.

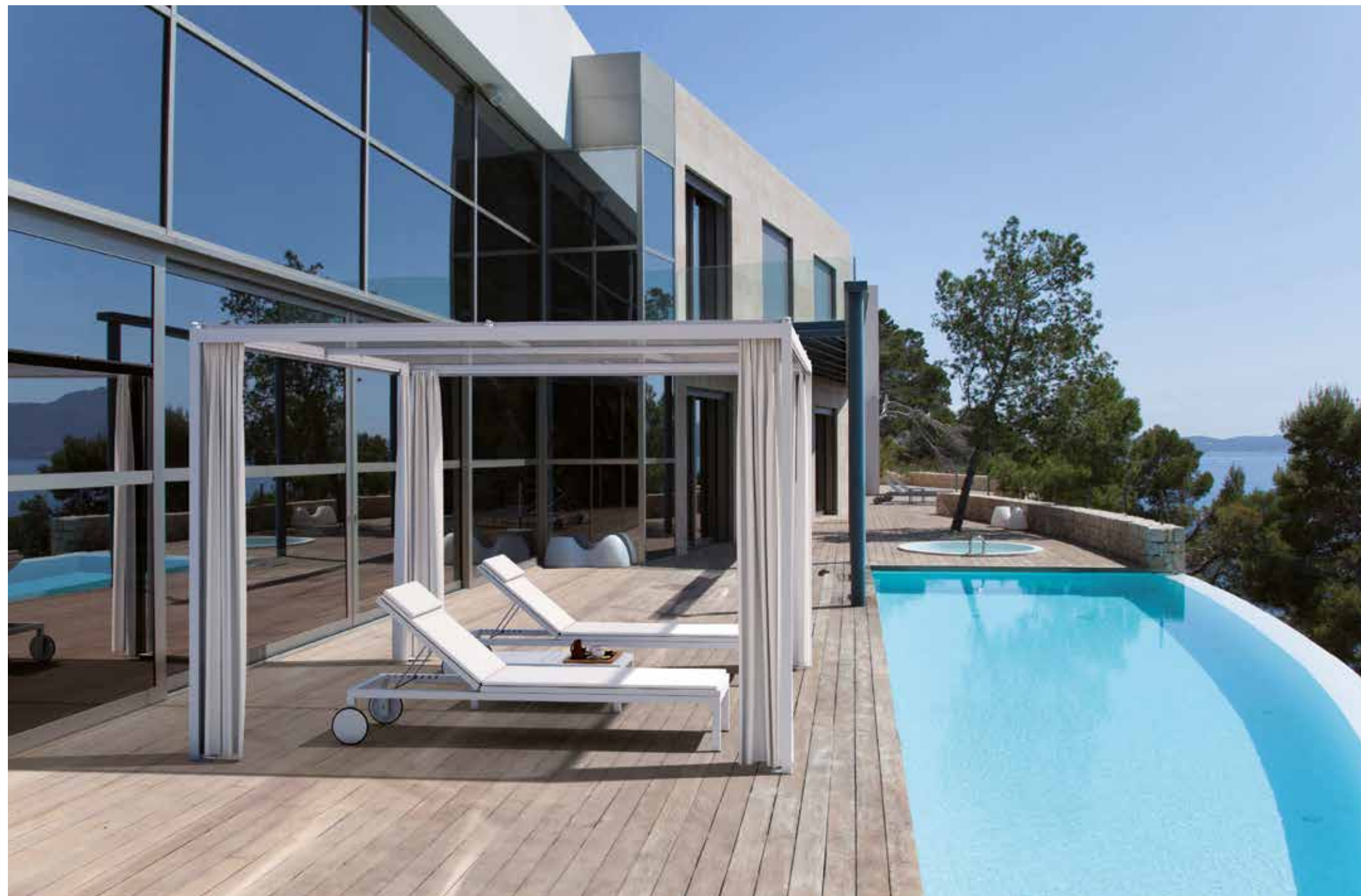
La nostra mission è porre al centro dell'attenzione i desideri e le necessità del cliente e "cucire per lui un abito perfetto realizzato con i migliori materiali".

Unosider has a solid and rigorous soul made of iron and metals and a softer and lighter one made of fabrics and decorations, a precise and technical side and a more romantic and visionary one.

Our greatest ability is to combine seemingly conflicting elements in an active and successful exchange that creates a whole new value.

For over 25 years we have been working to share our vision of outdoor space and build structures that shape new places and experiences.

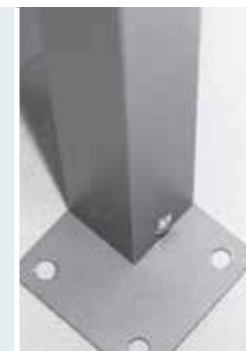
Our mission is to focus our attention on the wishes and needs of the customer and "to sew a perfect dress made from the finest materials for him".



#### INNESTO A SCOMPARSA HIDDEN COUPLING

Piede realizzato con tubolare in alluminio e piatto in acciaio con innesto a scomparsa in alluminio.

*The post base fits in a steel plate through an aluminium footing, and are joined by a hidden coupling.*



#### TENDITORI STRETCHERS

Dispositivo di tensionamento del tessuto microforato in acciaio inox.

*Stainless steel tensioning device for the micro-perforated fabric.*



#### TESSUTO MICROFORATO MICRO-PERFORATED FABRIC

Tessuto microforato Soltis, ombreggiante, in PVC con grande stabilità dimensionale.

*Micro-Perforated Soltis fabric, sun-shading, in PVC with great dimensional stability.*



# RESORT

## GAZEBO

Il gazebo Resort con struttura in alluminio è indicato per gli amanti delle linee essenziali in cerca di una struttura di protezione solare.

Il telo di copertura in SOLTIS 86 microforato garantisce un'ottima schermatura dai raggi UV e grazie allo speciale sistema di fissaggio, può essere montato e smontato in una decina di minuti.

*This gazebo, with an aluminium structure, is geared towards lovers of clean, essential lines who are in search of a comfortable shelter from the scorching sun. The covering in micro-perforated SOLTIS 86 guarantees the best protection from UV rays while its special fixing system ensure installation and dismantling in 10 minutes.*

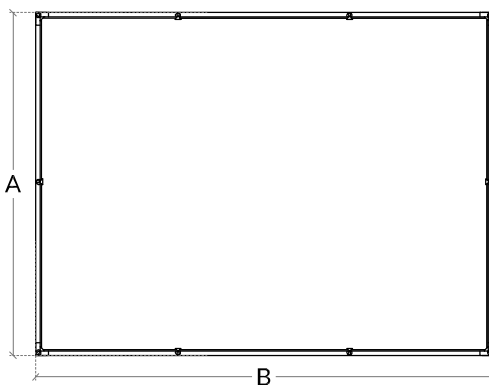
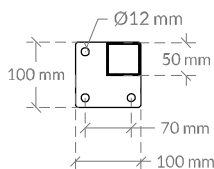
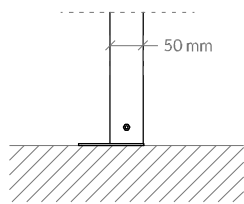


Misure standard: da 3x3 metri a 4x4 metri  
Realizzabile su misura  
Scheda tecnica pag 98



Standard size: 3 x 3 to 4 x 4 meters  
Custom size available  
Technical sheets page 98

# GAZEBO **RESORT**



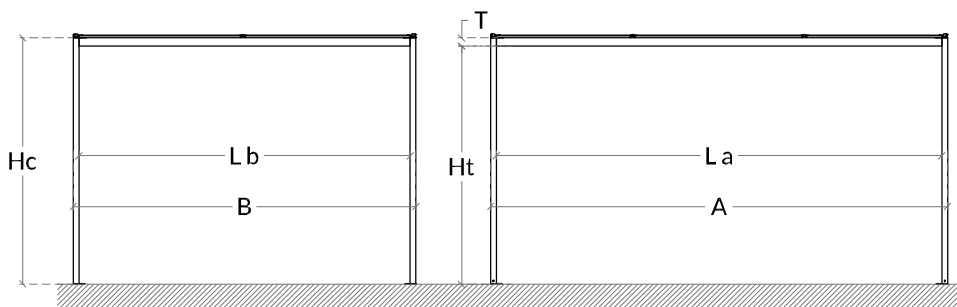
## STRUTTURA

anthracite  
silk white 9010  
silk oyster white 1013  
silk grey 7035  
**(+10%)**  
tundra  
taupe  
**mars**  
**brown**  
black  
white 9010  
oyster white 1013  
satin

## TETTO

### SOLTISHORIZON 86

bianco 6572-2044  
champagne 6572-2175  
antracite 6572-2047  
grigio pietra 6572-2171  
sabbia 6572-2135  
verde 6572-2158



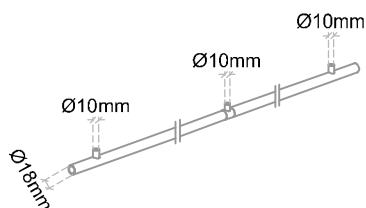
cm	300x300	300x400
A	300	300
B	300	400
La	288	288
Lb	288	388
T	8	8
Ht	215	215
Hc	224	224

MISURA (cm) AxB	300x300	300x400

- struttura in alluminio verniciata
- telo di copertura in SOLTIS HORIZON 86 ombreggiante

- sezione pilastro 60x60 mm sp 2 mm
- sezione trave 80x40 mm sp 2 mm
- dimensione massima 300x400 cm
- possibilità di realizzazione su misura
- sistema fissaggio del telo di copertura tramite dispositivi di tensionamento posizionati sugli angoli e nei punti medi delle travi perimetrali

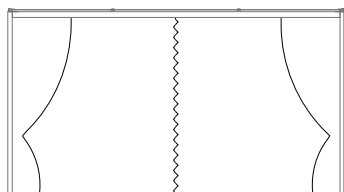
## ASTE PER TENDE



MISURA (cm) AxB	300x300	300x400

Kit n°4 tondini di scorrimento (diam 18 mm) disponibili nei colori della struttura.

## TENDE LATERALI CON CERNIERA



MISURA (cm) AxB	PROGAR	ACRYLSHED / RAYTENT DRAPERY
300x300	i	
300x400	i	

Kit n°4 tende laterali in tessuto acrilico, con cerniera di chiusura centrale (a vista) sistema di scorrimento con passanti in tessuto acrilico (cuciti). Fissaggio alle colonne mediante passanti cuciti e fascette di velcro. Tessuti e colori a pag. 7

### NB

- aggiungere aste per tende
- le confezioni dei teli laterali possono avere cuciture asimmetriche
- per altezza sottotrave (Ht) fuori standard, superiore a 215cm, richiedere preventivo

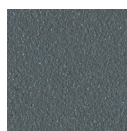
# OPZIONI COLORE | GAZEBO E PERGOLE



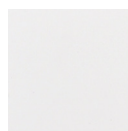
## STRUTTURA

Verniciatura elettrostatica a polveri di poliestere.  
Fasce di prezzo riportate nelle rispettive colonne a listino.  
Per colori differenti richiedere fattibilità, costi e tempi di produzione.

anthracite



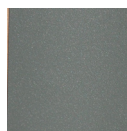
silk white 9010



silk oyster white 1013 silk grey 7035



tundra



taupe



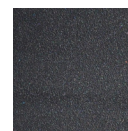
mars



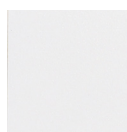
brown



black



white 9010



oyster white 1013



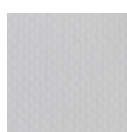
satin



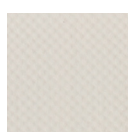
## FLEXLIGHT CLASSIC 602

semi-gloss PVC membrane  
waterproof  
weight 650 g/m<sup>2</sup>  
height 267 cm  
fire rating  
euro class EN 13501-1(B-s2-d0)  
warranty 3 years  
use RWP, CDE

bianco  
6285-102



champagne  
6285-341



## OPATEX PRO

PVC membrane with blackout film  
internal textile effect  
waterproof  
weight 850 g/m<sup>2</sup>  
height 300 cm  
fire rating uni 9177: class 2  
euro class EN 13501-1: B-s2-d0  
warranty 5 years  
use RWP

bianco  
6693-112



champagne  
6693-272



## FLEXLIGHT LODGE 6002

PVC membrane with textile effect  
waterproof  
weight 630 g/m<sup>2</sup>  
height 260-300 cm  
fire rating uni 9177: class 2  
euro class EN 13501-1(B-s2-d0)  
warranty 5 years  
use RWP, CDE

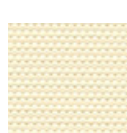
bianco  
6002-20183



taupe  
6002-20165



vaniglia  
6002-10387



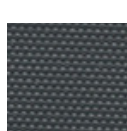
grigio chiaro  
6002-20001



grigio  
6002-20024



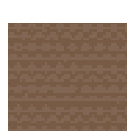
anthracite  
6002-20205



beige scuro  
6002-20329



argilla marrone  
6002-20331



verde  
6002-20330

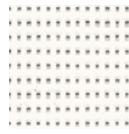


## SOLTIS HORIZON 86

---

perforated PVC membrane  
shading  
weight 380 g/m<sup>2</sup>  
height 177-267 cm  
fire rating uni 9177: class 1  
euro class EN 13501-1: B-s2-d0  
warranty 5 years  
use RSH,CTE,SSH

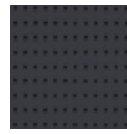
6572-2044



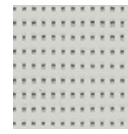
6572-2175



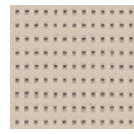
6572-2047



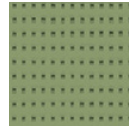
6572-2171



6572-2135



6572-2158

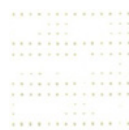


## SOLTIS LOUNGE 96

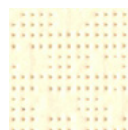
---

micro-perforated PVC membrane  
shading  
weight 400 g/m<sup>2</sup>  
height 120-267 cm  
fire rating uni 9177: class 2  
warranty 5 years  
use CTE

6532-8102



6532-1103



6532-2047



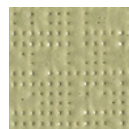
6532-2171



6532-2135



6532-50848



## TENTMESH

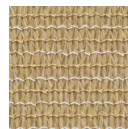
---

HDPE polyethylene net  
shading  
weight 340 g/m<sup>2</sup>  
height 300 cm  
warranty 10 years  
use SSH

8020-759



8020-704



## PVC CRISTAL 500 1S

---

transparent PVC membrane  
waterproof  
weight 610 g/m<sup>2</sup>  
height 140 cm  
use CDE, CTE

8707



## IRISUN SHADE SOLIDS

---

solution-dyed ACRYLIC fabric  
stiff handle  
water repellent, anti-mould, anti-stain  
weight 290 g/m<sup>2</sup>  
height 120 cm  
warranty 10 years  
use RWR, SWR, CTE

3400-G042

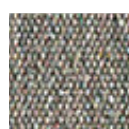


## RAYTENT SHADE

---

solution-dyed ACRYLIC fabric  
>50% recycled fibre  
stiff handle  
water repellent, anti-mould, anti-stain  
weight 290 g/m<sup>2</sup>  
height 120 cm  
warranty 10 years  
use RWR, SWR, CTE

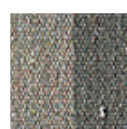
3705-201



3705-801



3705-890



3705-704



## PROGAR 2913

---

yarn-dyed ACRYLIC fabric  
semi-soft handle  
water repellent, anti-mould  
weight 290 g/m<sup>2</sup>  
height 247 cm  
use CDE, CC

3674-010



3674-000

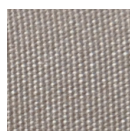


## PROGAR 2021

---

solution dyed weft and yarn-dyed warp  
semi-soft handle  
water repellent, anti-mould  
weight 290 g/m<sup>2</sup>  
height 247 cm  
use CDE, CC

3676-688

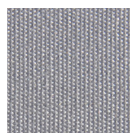


## IRISUN LIVING PLAIN

---

solution-dyed ACRYLIC fabric  
soft handle  
water repellent, anti-mould, anti-stain  
weight 240 g/m<sup>2</sup>  
height 137 cm  
warranty 5 years  
use CDE, CC

3399-071



3399-014



## ACRYLSHED

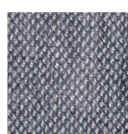
---

solution-dyed ACRYLIC fabric  
light handle  
water repellent, anti-mould, anti-stain  
weight 130 g/m<sup>2</sup>  
height 250 cm  
warranty 5 years  
use CDE, CC

3364-016



3364-834



3364-010



3364-386

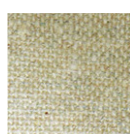


## RAYTENT DRAPERY

---

solution-dyed ACRYLIC fabric  
>50% recycled fibre  
light handle  
water repellent, anti-mould, anti-stain  
weight 140 g/m<sup>2</sup>  
height 300 cm  
warranty 5 years  
use CDE, CC

3708-001



3708-801



3708-502

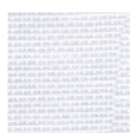


## POLYSHED

---

POLYESTER fabric  
light handle  
water repellent, anti-mould, anti-stain  
weight 120 g/m<sup>2</sup>  
height 320 cm  
use CDE, CC

3368-010



## DRAP

---

solution-dyed ACRYLIC fabric  
light handle  
water repellent, anti-mould, anti-stain  
weight 210 g/m<sup>2</sup>  
height 280 cm  
warranty 5 years  
use CDE, CC

3737-974



## PROMESH

---

solution-dyed ACRYLIC fabric mesh  
soft handle  
water repellent, anti-mould, anti-stain  
weight 210 g/m<sup>2</sup>  
height 260 cm  
warranty 5 years  
use CDE, CC

3621-010

